

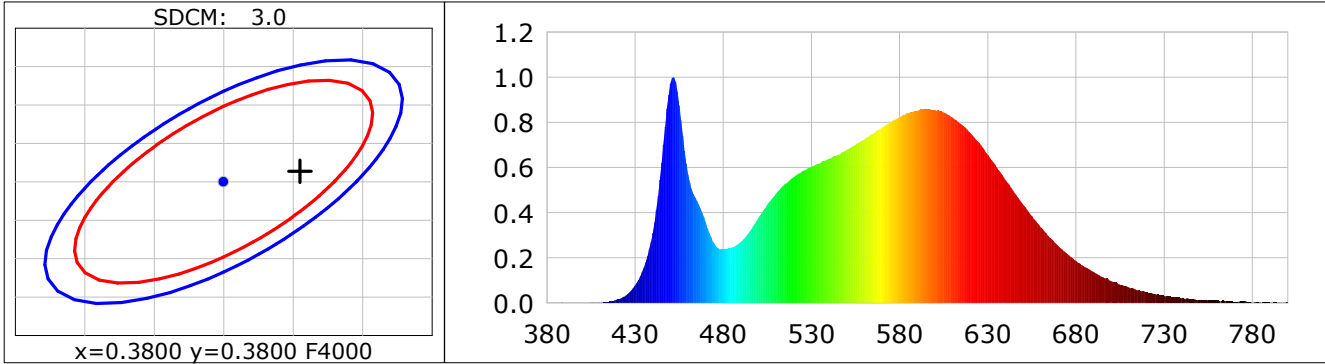
Lightsource Test Report

Product Infomation

Product Category: LED STRIP	Product Type: LED STRIP
Product Spec: DRAC 2	Product Number: 229
Manufacturer: TECSOLELED S.L.	Buyer: TECSOLELED S.L.

CIE Colorimetric Parameters

Chromaticity coordinates: $x=0.3855$ $y=0.3813$ $u(u')=0.2266$ $v=0.3362$ $v'=0.5043$
 CCT: $T_c=3900K$ ($duv=0.00069$) Color Ratio: $R=0.186$ $G=0.779$ $B=0.035$
 Peak Wavelength: 451.6nm Half Bandwidth: 18.9nm
 Dominant Wavelength: 579.1nm Color Purity: 0.302
 CRI: $R_a=82.7$, $avgR(1\sim14)=75.9$, $avgR(1\sim15)=75.8$ TM30: $R_f=83$, $R_g=95$
 GAI: $GAI_BB_8=91.4$, $GAI_BB_15=98.9$, $GAI_EES=70.5$
 R1 =81 R2 =89 R3 =95 R4 =81 R5 =81 R6 =85 R7 =85 R8 =64
 R9 =7 R10=74 R11=80 R12=59 R13=83 R14=97 R15=75
 Color Quality Scale: $Q_a=82.3$, $Q_f=82.6$, $Q_p=82.1$, $Q_g=92.3$
 Q1 =81 Q2 =98 Q3 =79 Q4 =75 Q5 =81 Q6 =83 Q7 =85 Q8 =88
 Q9 =98 Q10=89 Q11=85 Q12=84 Q13=84 Q14=72 Q15=76



Photometric Parameters

Luminous Flux: 1164.9 lm Efficiency: 138.73 lm/W Radiant Power: 3.472 W
 Total mains efficacy: 128.46 lm/W Energy Efficiency Class: E (EU 2019/2015)

Electric Parameters

Voltage: 24.000V Current: 0.3499A Power: 8.40W
 Power Factor: 1.0000 Frequency: 0.00Hz

Test Infomation

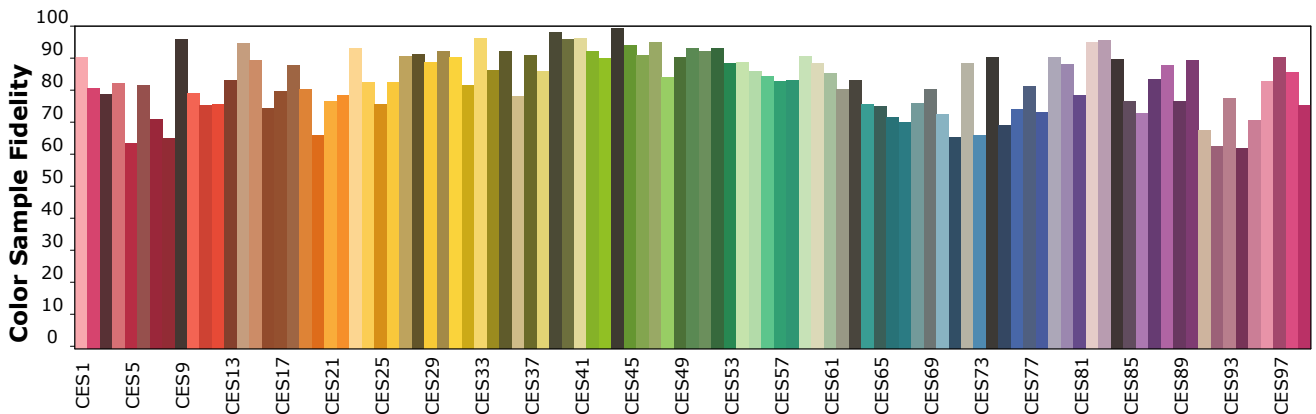
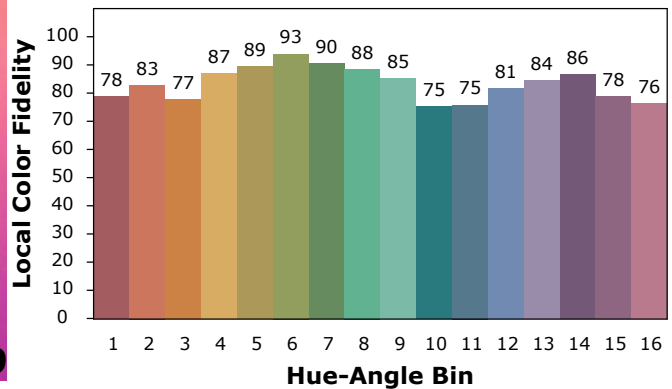
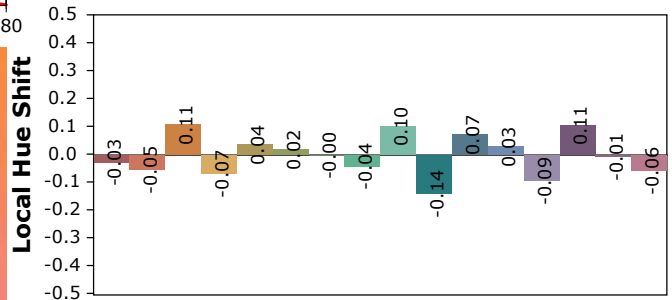
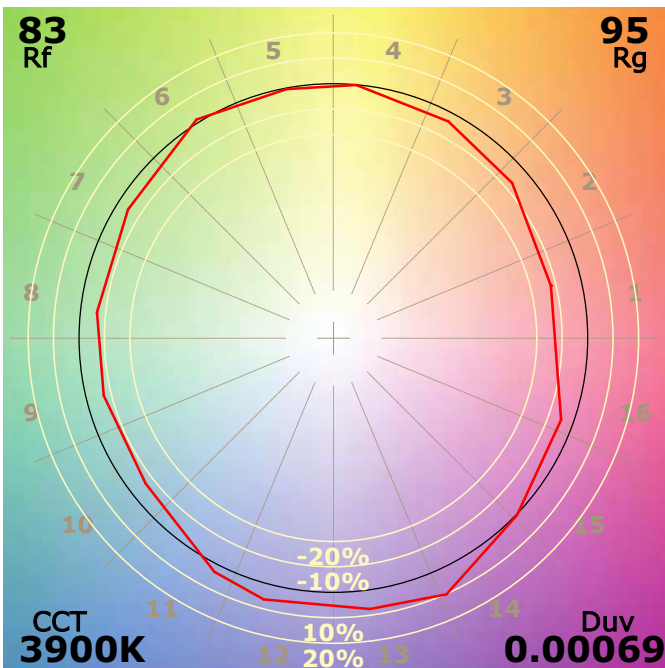
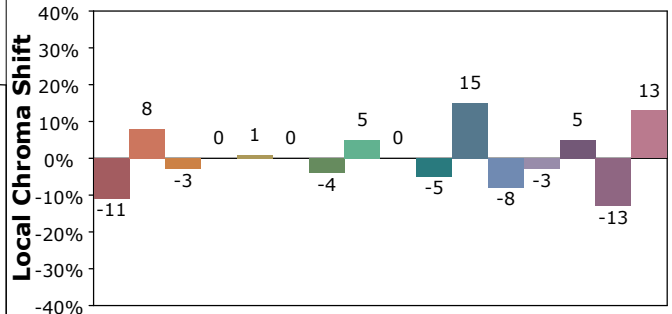
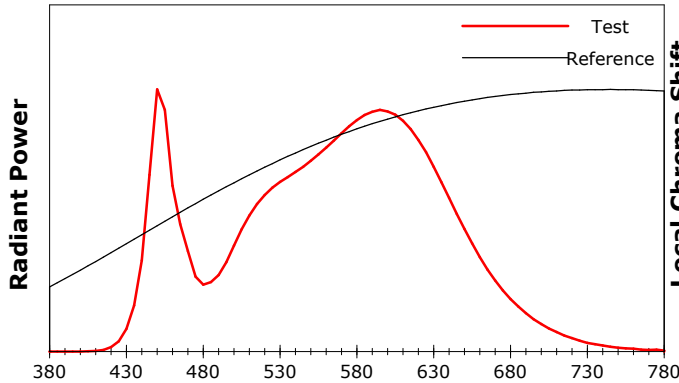
Scan Range: 380~800:1nm	Photometric Method: sphere-spectroradiometer
Stabilization Time: 0 Sec ALC.: 1.0000	Photometric Condition: Sphere diameter: 1.50m, 4PI
Max of Signal: 46418 (2208)	CCD Integration Time: 475.65 ms

IES TM-30-18 Color Rendition Report

Product Information

Product Category: LED STRIP
 Product Spec: 21059602440514
 Manufacturer: TECSOLED S.L.

Product Type: LED STRIP
 Product Number: 229
 Buyer: TECSOLED S.L.



Condition: Tx:20.1°C, Ti:19.0°C, R.H.:60%
 Test Lab: TECSOLED S.L.
 Operator: JORDAN GIL DIAZ

Test Device: Inventfine CMS-2S (Plus)
 Test Time: 2021-10-28 11:15:52
 Inspector: